

Build your on fundraiser campaign!

Dear friend,

Thank you for your interest in planning a fundraiser campaign in support of Epilepsy Newfoundland and Labrador (ENL).

You're amazing! We rely on support and donations from individuals and organizations to help more people live well with epilepsy. You are helping to deliver research, treatment, and practical support to our community.

We are happy to provide you with this guide to give you lost of ideas and tips to kick start your fundraising campaign. ENL is here to help and support in any way possible to ensure the best experience for both you and your participants.





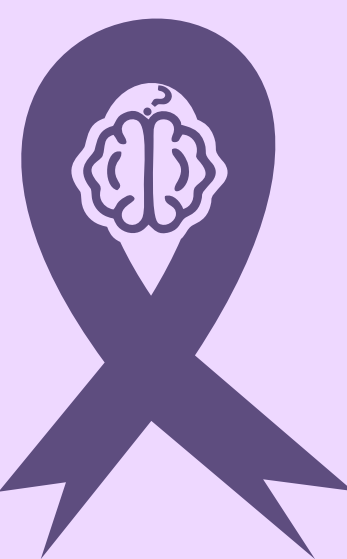
Fundraising Ideas

- Birthday's, Weddings or Anniversaries
- Bake sale
- Wear purple
- BBQ
- Car Wash
- Bottle Drive
- Work Event

- Craft sale
- School Fundraiser
- 50/50 Raffle
- Garage Sale
- Social Media/Online Event
- Purple day March 26
- Change your look

How to make your event a success

- Decide if this is a private or public event
- Be clear of this event early on
- Ensure you have adequate promotion and give yourself enough time
- Download our logos and templates



Ready to start fundraising?

Use this checklist to help you succeed



Decide on your fundraising activity and set a date



Let us know about your plans by contacting us on 709-722-0505 or info@epilepsynl.com



Contact us if your going to set up an online page



Tell your friends, promote your event on social media (Facebook, Instagram, Twitter...)

